

0323-320 P.O.C.
 NORTHWEST CORNER SECTION 22,
 TOWNSHIP 47 SOUTH, RANGE 42 EAST,
 FOUND PALM BEACH COUNTY
 BRASS DISK IN CONCRETE MONUMENT

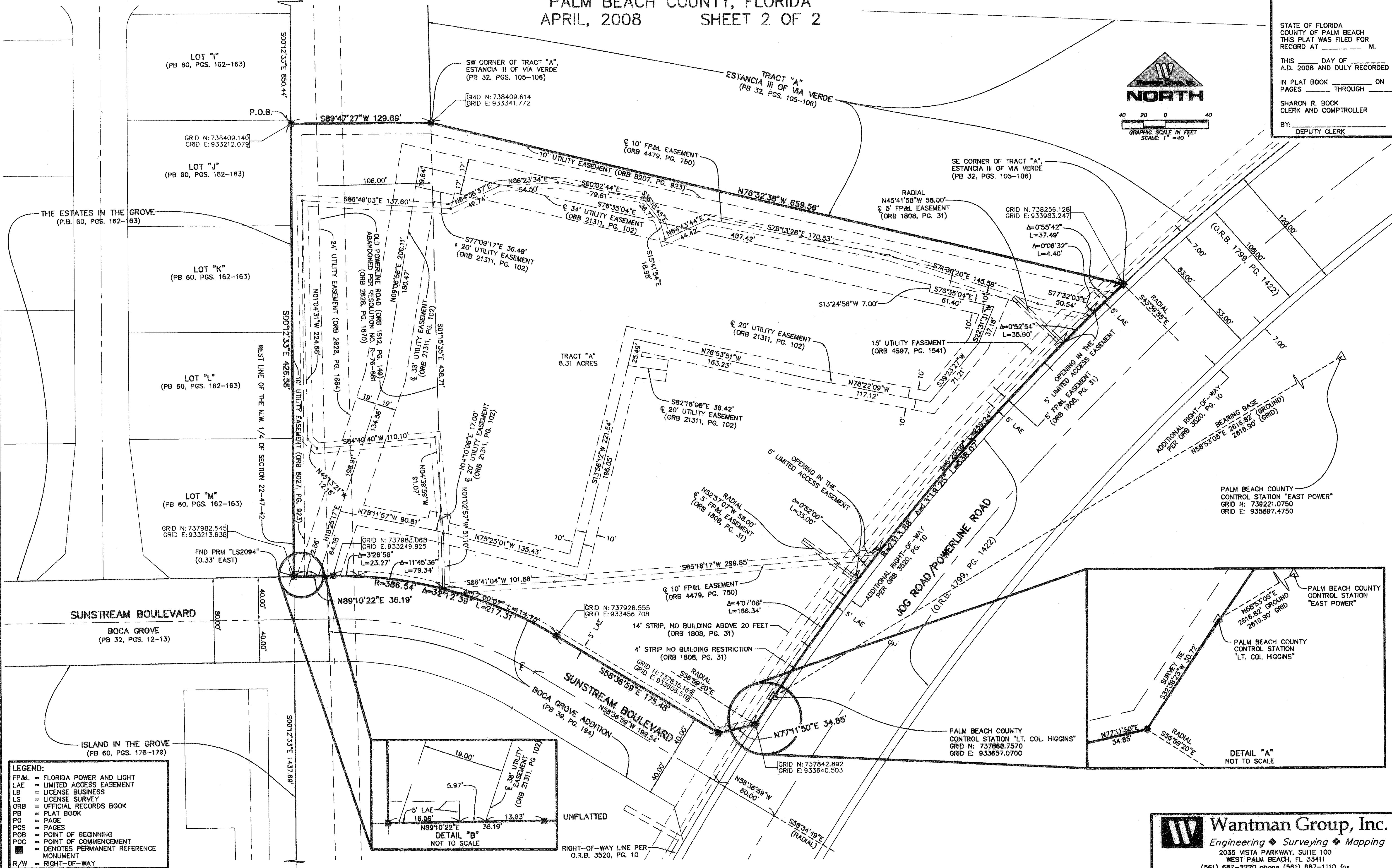
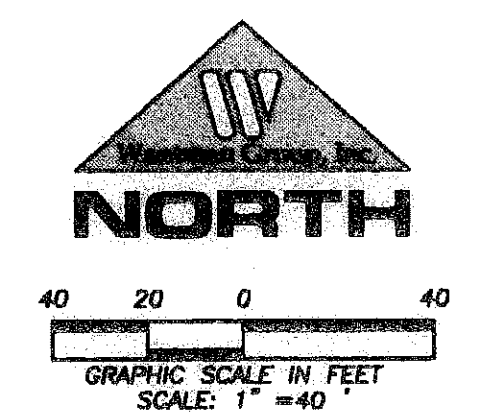
GRID N: 739259.596
 GRID E: 933208.973

SHOPS OF BOCA GROVE

A PARCEL OF LAND SITUATED IN SECTION 22, TOWNSHIP 47 SOUTH, RANGE 42 EAST,
 PALM BEACH COUNTY, FLORIDA
 APRIL, 2008 SHEET 2 OF 2

86

STATE OF FLORIDA
 COUNTY OF PALM BEACH
 THIS PLAT WAS FILED FOR
 RECORD AT _____ M.
 THIS _____ DAY OF _____
 A.D. 2008 AND DULY RECORDED
 IN PLAT BOOK _____ ON
 PAGES _____ THROUGH _____
 SHARON R. BOCK
 CLERK AND COMPTROLLER
 BY: _____
 DEPUTY CLERK



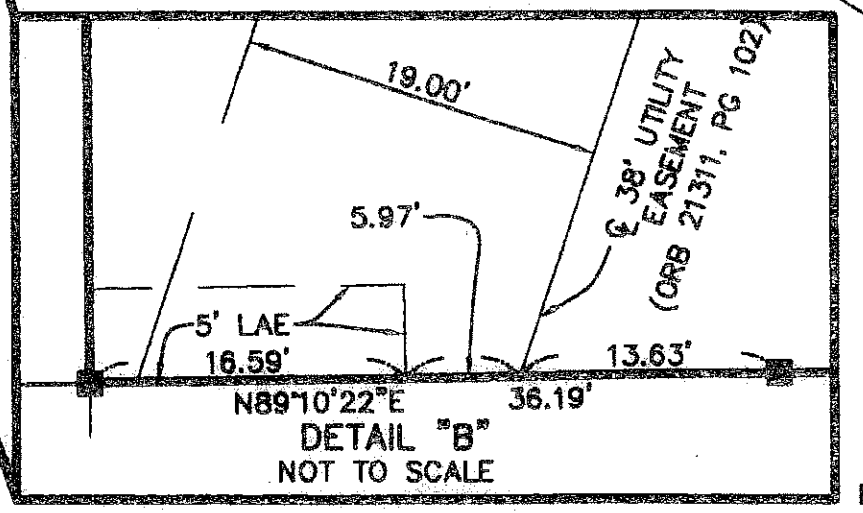
PALM BEACH COUNTY
 CONTROL STATION "EAST POWER"
 GRID N: 739221.0750
 GRID E: 935897.4750

PALM BEACH COUNTY
 CONTROL STATION "EAST POWER"
 2616.82' GROUND
 2616.90' GRID

PALM BEACH COUNTY
 CONTROL STATION "LT. COL. HIGGINS"
 GRID N: 737868.7570
 GRID E: 933657.0700

DETAIL "A"
 NOT TO SCALE

- LEGEND:**
- FP&L = FLORIDA POWER AND LIGHT
 - LAE = LIMITED ACCESS EASEMENT
 - LB = LICENSE BUSINESS
 - LS = LICENSE SURVEY
 - ORB = OFFICIAL RECORDS BOOK
 - PB = PLAT BOOK
 - PG = PAGE
 - PGS = PAGES
 - POB = POINT OF BEGINNING
 - POC = POINT OF COMMENCEMENT
 - = DENOTES PERMANENT REFERENCE MONUMENT
 - R/W = RIGHT-OF-WAY



WEST QUARTER CORNER SECTION 22, TOWNSHIP 47 SOUTH, RANGE 42 EAST,
 FOUND PALM BEACH COUNTY BRASS DISK IN CONCRETE MONUMENT AT A
 80' OFFSET SOUTH OF 1/4 CORNER ON THE WEST LINE OF THE
 SOUTHWEST QUARTER OF SAID SECTION

GRID N: 736544.818
 GRID E: 933218.890

Wantman Group, Inc.
 Engineering ♦ Surveying ♦ Mapping
 2035 VISTA PARKWAY, SUITE 100
 WEST PALM BEACH, FL 33411
 (561) 687-2220 phone (561) 687-1110 fax
 CERT No. 6091 - LB No. 7055
 THIS INSTRUMENT WAS PREPARED BY MARTIN J. SHATTO, P.S.M.
 PROFESSIONAL SURVEYOR AND MAPPER, REGISTRATION NO. 5219
 IN THE OFFICES OF WANTMAN GROUP, INC.